



Horn Lane, W3

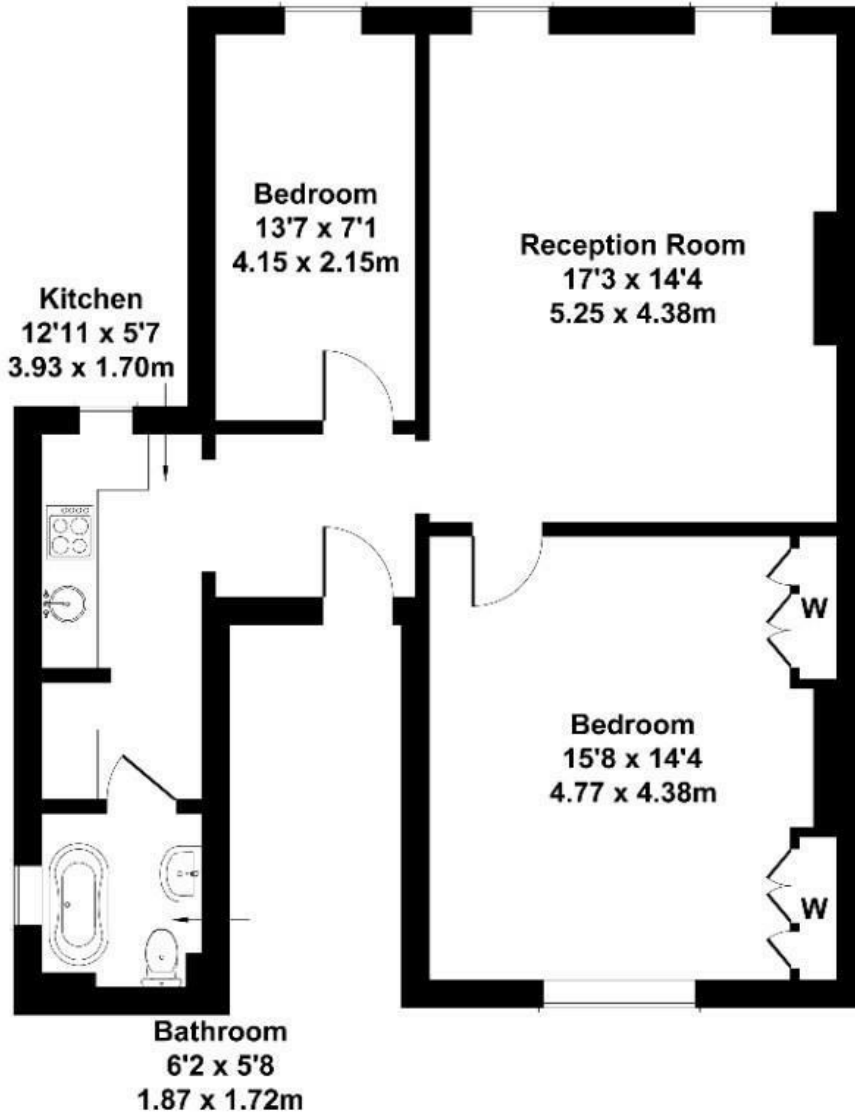
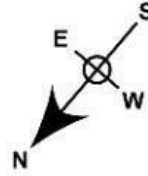
Long Let. This spacious 2 bed property is located in a central prime area located moments from local transport and amenities.

- Available May 14th 2026
- Excellent location
- Communal garden
- Parking
- Close to local amenities
- Early viewing advised

£1,800 Per Month

Horn Lane

Approximate Gross Internal Area
743 sq ft - 69 sq m



FIRST FLOOR

Not to Scale. Produced by The Plan Portal 2024
For Illustrative Purposes Only.

Energy Efficiency Rating		Current	Potential
Very energy efficient - lower running costs			
(92 plus) A			
(81-91) B			
(69-80) C			
(55-68) D		68	
(39-54) E			
(21-38) F			
(1-20) G			
Not energy efficient - higher running costs			
England & Wales	EU Directive 2002/91/EC		